



Pressure-temperature gauge

H 032

Back-connection

The pressure-temperature gauge combines the characteristics of a pressure gauge with them of a thermometer in one instrument. It is produced for the use in many types of high temperature water systems.

Application: Boiler and plant industry, heating systems

Nominal size: 80 mm

Housing: Sheet steel black

Pointer: Aluminum, black / plastic red

Dial:

- ♦ Aluminum, white
- ♦ Scale, black, red and blue

Window: Plastic

Connection: Immersion stem brass G $\frac{1}{2}$ ", axial

Measuring range: 0+120°C - 0+200°C / 0-4 bar - 0-20 bar

Accuracy: $\pm 2,5 \%$

Options:

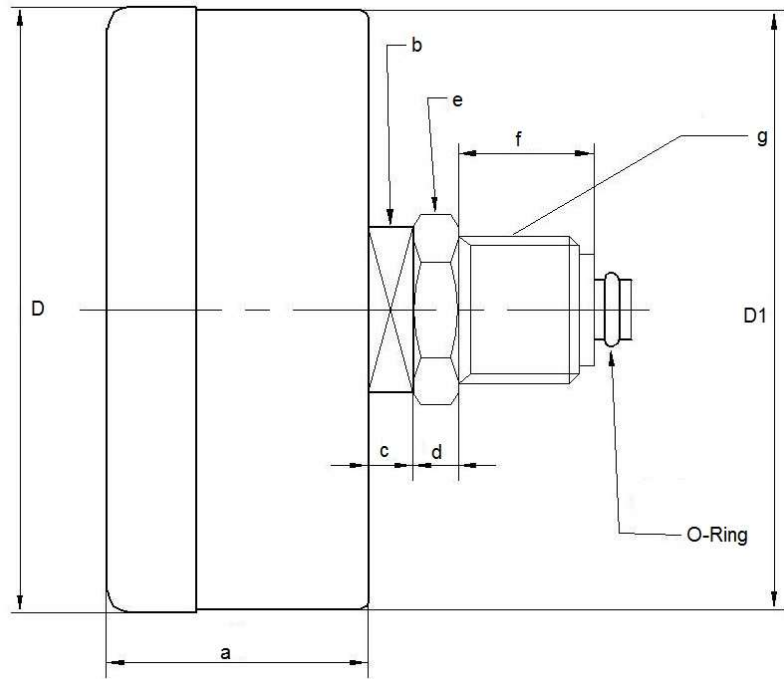
- ♦ Other nominal sizes
- ♦ with radial connection
- ♦ with flange
- ♦ Window in glass

Pressure-temperature gauge

H 032

Back-connection

The pressure-temperature gauge combines the characteristics of a pressure gauge with them of a thermometer in one instrument. It is produced for the use in many types of high temperature water systems.



(D) = Nominal size	D1	a	b	c	d	(e) = Wrench width	f	(g) = connectio n	C° / BAR
Ø 80	Ø 79	32	14 x 14	9	8	SW 21	15	G½"	0+120°C -0+200°C 0-4 bar – 0-20 bar

Size in mm

Details

We can offer further versions and special remarks on request.

[Technical changes reserve.](#)