



## Bimetal-thermometer

H 010

### Connection eccentric

Bimetal-thermometer for heating systems.

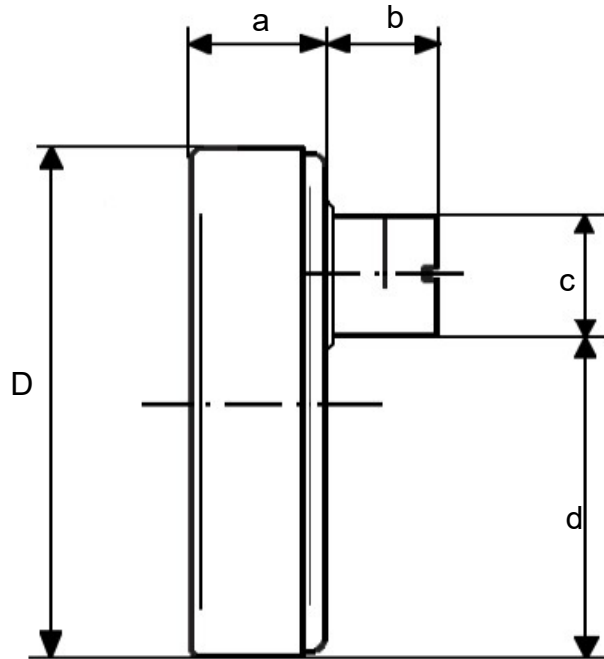
|                    |  |
|--------------------|--|
| Application:       | Heating and sanitation systems   |
| Nominal size:      | 63 mm  |
| Housing:           | Sheet steel, galvanised  |
| Push on bezel:     | Sheet steel, nickel-plated   |
| Dial:              | <ul style="list-style-type: none"> <li>♦ plastic white with pulled up edge as screen</li> <li>♦ scale with projecting rim</li> </ul> |
| Scale:             | <ul style="list-style-type: none"> <li>♦ red</li> <li>♦ blue</li> <li>♦ white</li> </ul>   |
| Window:            | plastic / instrument glass   |
| Blend ring:        | White, red, blue (from 120°C without blend ring)   |
| Connection:        | Off-center plug, k brass Ø 15 mm   |
| Measuring element: | Bimetal helix  |
| Measuring range:   | 20+100°C, 20+130°C   |
| Accuracy:          | Class 2 (DIN 16203 / DIN EN 13190)   |
| Options:           | Other measuring ranges and scales  |

Bimetal-thermometer

H 010

**Connection eccentric**

Bimetal-thermometer for heating systems.



| Nominal size (D) | a  | b  | c  | d  |
|------------------|----|----|----|----|
| 63               | 10 | 15 | 15 | 40 |

Size in mm

Details

We can offer further versions and special remarks on request.

[Technical changes reserve.](#)